



Mississippi Timber Price Report

2nd Quarter 2018



The **Mississippi Timber Price Report** is a quarterly publication providing a picture of timber market activity across the state. Regional and statewide stumpage prices for common forest products are reported. **This report should only be used as a guide** to help individuals monitor timber market trends. **The average price should not be applied** as fair market value for a specific timber sale because many variables influence actual prices each landowner will receive.

How are prices obtained? This report is based on 55 timber sales conducted and reported across Mississippi during the 2nd quarter 2018. Reporters include forest product companies, logging contractors, consulting foresters, landowners, and other natural resource professionals.

Are you interested in becoming a cooperative price reporter? Please by contact Marc Measells at mkm2@msstate.edu for more information.

This report and historical timber prices are available by contacting your local county Extension office or at www.extension.msstate.edu/forestry/forest-economics/timber-prices.

For more information about the **Mississippi Timber Price Report**, please contact Marc Measells at mkm2@msstate.edu or at 662-325-3550.

Price Trends

The 2nd quarter statewide stumpage prices for pine products are located in Table 1. Pine products reported include pine poles, sawtimber, plylogs, chip-n-saw, and pulpwood. Hardwood products include oak sawtimber, mixed hardwood sawtimber, pulpwood, and crossties (Table 2). We have included low and high prices to indicate differences landowners could expect to receive. The graphs reflect 10 year statewide average price trends.

The oversupply issue continues to influence timber prices in Mississippi. Compared to the 1st quarter 2018, statewide average prices for pine poles and pine sawtimber decreased while pine plylogs, chip-n-saw, and pulpwood prices increased. Oak sawtimber, mixed hardwood sawtimber, and crossties increased in value statewide compared to 1st quarter 2018 while hardwood pulpwood decreased. However, regional differences were noticed for each species/product class with some regions seeing increased prices while other regions decreased.

Prices are expected to remain relatively stable, with slight increases for some species/product classes and slight decreases for others. Prices in north Mississippi, particularly pulpwood will continue to suffer because of oversupply and reduced demand in the area.

Mississippi Timber Price Report Regions

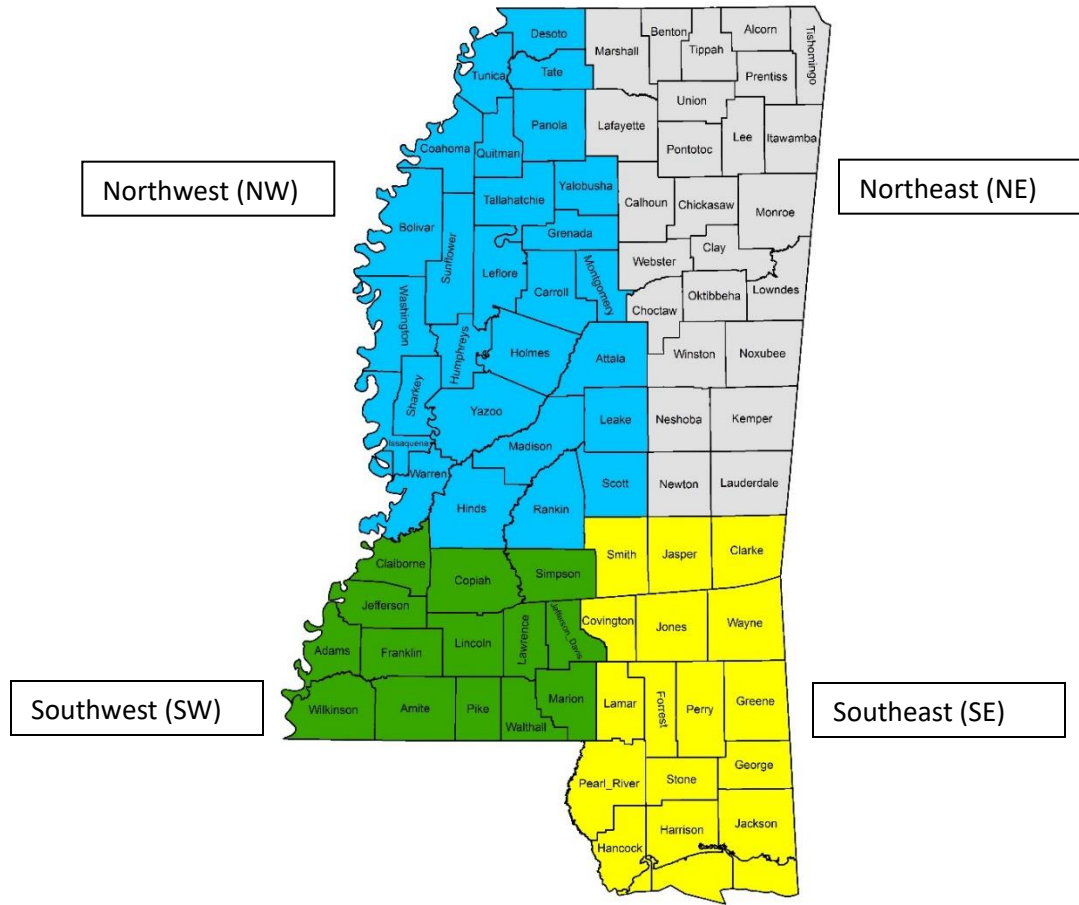


Table 1: Mississippi 2nd Quarter 2018 pine stumpage prices 2018 (\$/ton).

Region		Pine Poles	Pine Sawtimber	Pine Plylogs	Pine Chip-n-Saw	Pine Pulpwood
NW	Low	IND	\$12.87	IND	\$7.50	\$0.50
	High	IND	\$24.00	IND	\$14.00	\$6.08
	Average	IND	\$20.04	IND	\$11.74	\$3.39
NE	Low	IND	\$15.00	IND	\$10.00	\$1.70
	High	IND	\$26.65	IND	\$17.00	\$5.20
	Average	IND	\$20.67	IND	\$12.51	\$3.51
SW	Low	IND	\$18.30	\$20.00	\$12.00	\$3.00
	High	IND	\$34.58	\$24.00	\$18.28	\$11.00
	Average	IND	\$25.45	\$22.00	\$15.19	\$7.57
SE	Low	IND	\$26.50	\$17.00	\$9.00	\$3.50
	High	IND	\$28.00	\$26.50	\$15.30	\$12.50
	Average	IND	\$27.17	\$21.95	\$12.76	\$8.28
Statewide	Low	\$38.00	\$12.87	\$15.00	\$7.50	\$0.50
	High	\$45.00	\$34.58	\$26.50	\$18.28	\$12.50
	Average	\$41.33	\$22.62	\$21.06	\$13.28	\$5.79

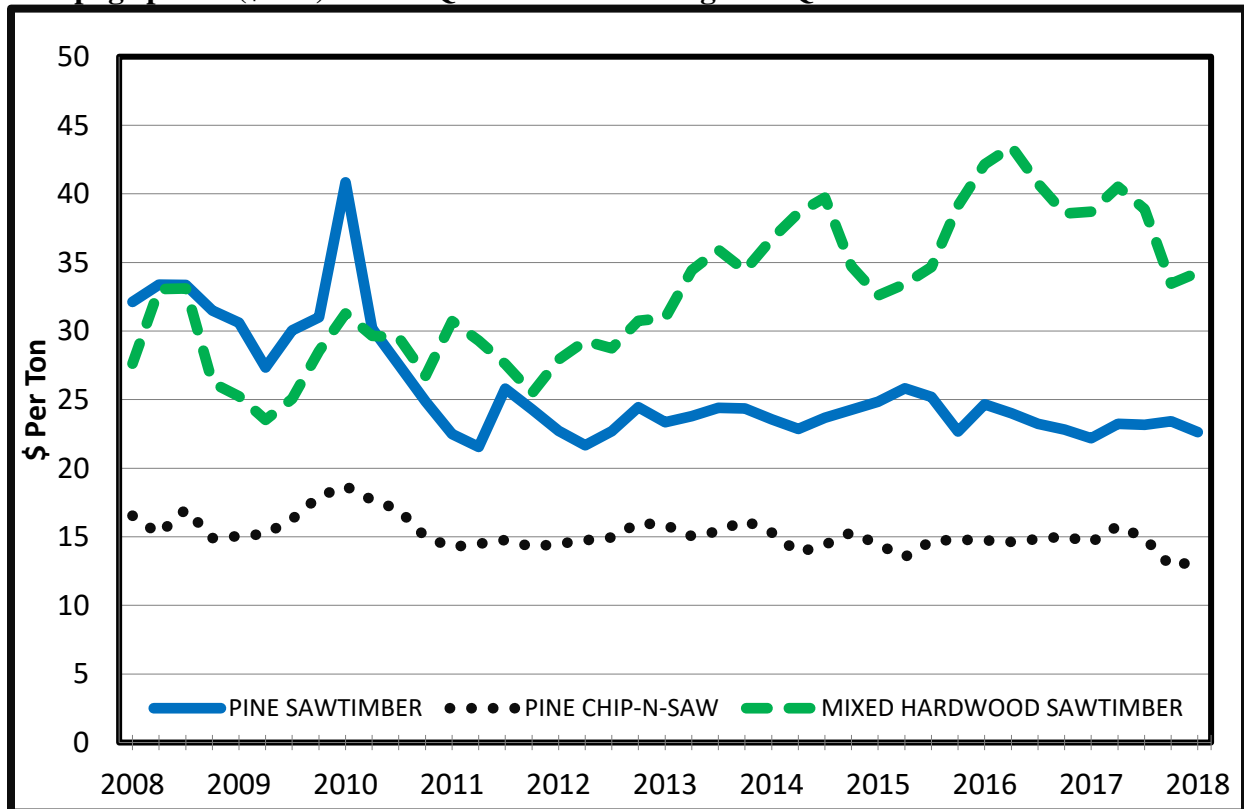
*IND = Insufficient or No Data Reported.

Table 2: Mississippi 2nd Quarter 2018 hardwood stumpage prices (\$/ton).

Region		Oak Sawtimber	Mixed Hardwood Sawtimber	Hardwood Pulpwood	Crossties
NW	Low	\$48.00	\$18.00	\$1.75	IND
	High	\$53.00	\$40.00	\$15.00	IND
	Average	\$51.40	\$30.93	\$6.80	IND
NE	Low	\$50.00	\$30.00	\$4.00	IND
	High	\$54.00	\$44.00	\$14.00	IND
	Average	\$51.33	\$35.29	\$9.56	IND
SW	Low	\$48.00	\$30.00	\$4.00	\$30.00
	High	\$51.78	\$40.17	\$10.39	\$35.00
	Average	\$49.84	\$35.80	\$6.82	\$31.67
SE	Low	IND	IND	IND	IND
	High	IND	IND	IND	IND
	Average	IND	IND	IND	IND
Statewide	Low	\$48.00	\$18.00	\$1.75	\$30.00
	High	\$54.00	\$44.00	\$15.00	\$35.00
	Average	\$50.67	\$34.27	\$7.66	\$32.43

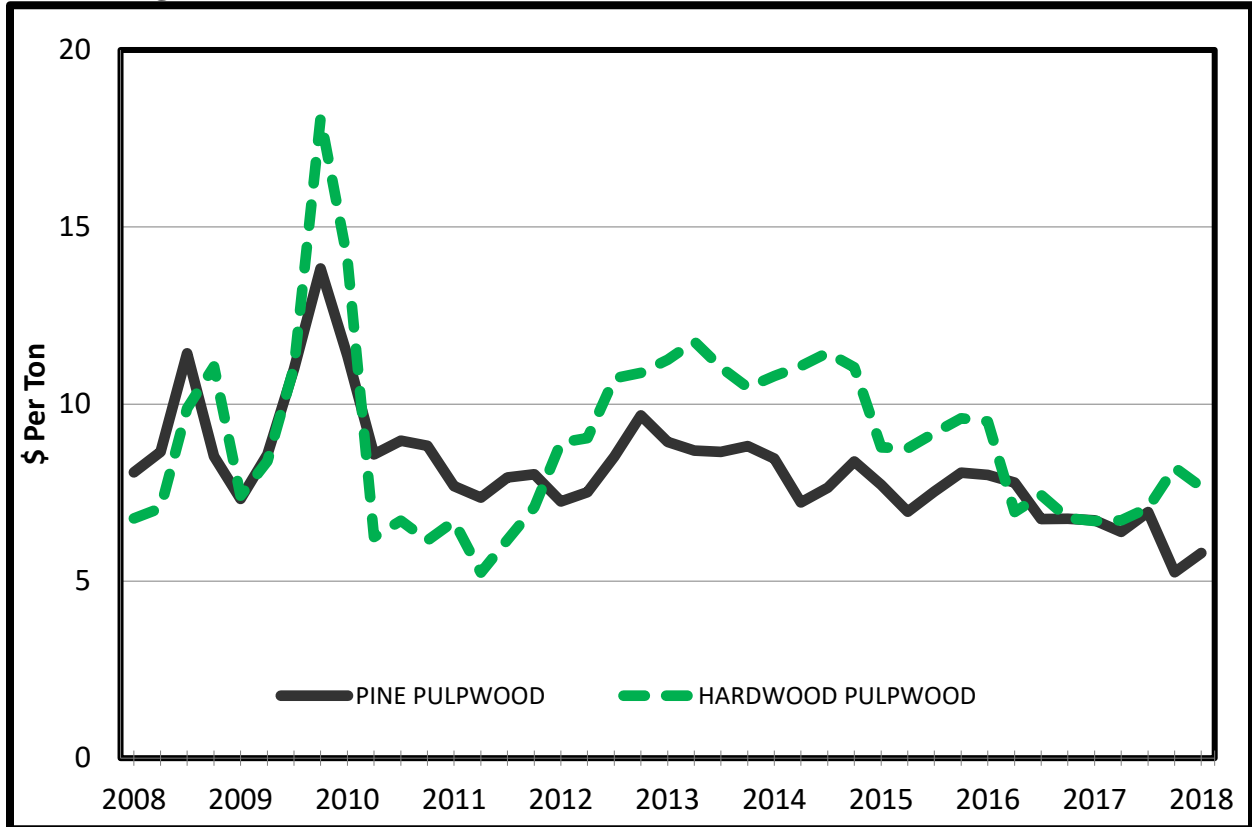
*IND = Insufficient or No Data Reported.

Average Mississippi pine sawtimber, pine chip-n-saw, and mixed hardwood sawtimber stumpage prices (\$/ton) for 2nd Quarter 2008 through 2nd Quarter 2018.*



*Prices from 2008-2017 are from Timber Mart-South. 2018 prices are from Mississippi State University Extension.

Average Mississippi pine and hardwood pulpwood stumpage prices (\$/ton) for 2nd Quarter 2008 through 2nd Quarter 2018.*



*Prices from 2008-2017 are from Timber Mart-South. 2018 prices are from Mississippi State University Extension.

Timber-Mart South (TMS), Inc. has more detailed data available by subscription that contains values for other timber products not included in this report. TMS is compiled and produced at the Center for forest Business, Warnell School of Forest Resources, University of Georgia, under contract with the Frank W. Norris Foundation, a non-profit corporation serving the forest products industry. See <http://WWW.TMARTSOUTH.COM/> for information on subscriptions.

Mississippi State University is an equal opportunity institution. Discrimination in university employment, programs, or activities based on race, color, ethnicity, sex, pregnancy, religion, national origin, disability, age, sexual orientation, genetic information, status as a U.S. veteran, or any other status protected by applicable law is prohibited. For more information, please contact the Office of Compliance and Integrity, 56 Morgan Avenue, P.O. 6044, Mississippi State, MS 39762.